



# Lady Beetle Life Cycle Model

Lady beetles go through complete metamorphosis during their life cycle. Let's build a model of the different stages, which could be used for a diorama or a mobile.

You will need:

- Printer
- Card stock or a manila file folder
- Glue stick, tacky glue, or double-sided scrapbooking tape
- Age-appropriate scissors
- Ruler
- Colored pencils, markers, or crayons

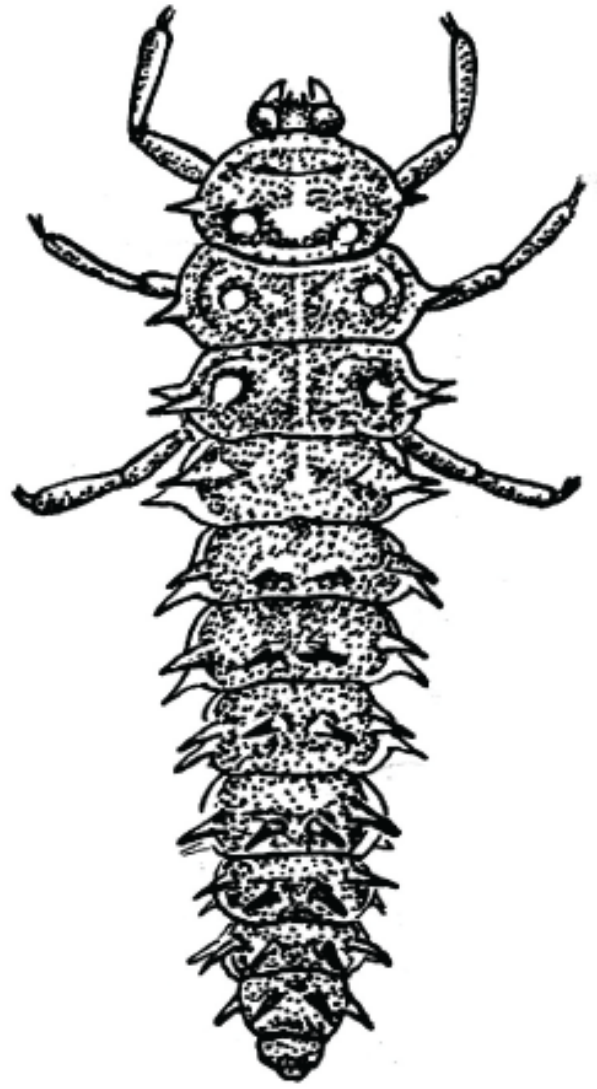
- ✖ ***Print out the next page. Glue it to card stock or a manila file folder to add stiffness.***
- ✖ ***Cut out each life stage separately: Eggs, larva, pupa, and adult. You can leave as much space around as you desire. Color the models.***
- ✖ ***If you are making a mobile, poke a hole in each and add sting or yarn to hang it in a grouping from a coat hanger or a branch.***
- ✖ ***If you want to make a diorama, add depth to the model by attaching a loop of card stock under the adult and larva. Add stands to the eggs and pupa (optional). See last page for more details.***

(<To add stands,  
cut on brown lines)

lady beetle eggs  
(not to scale)

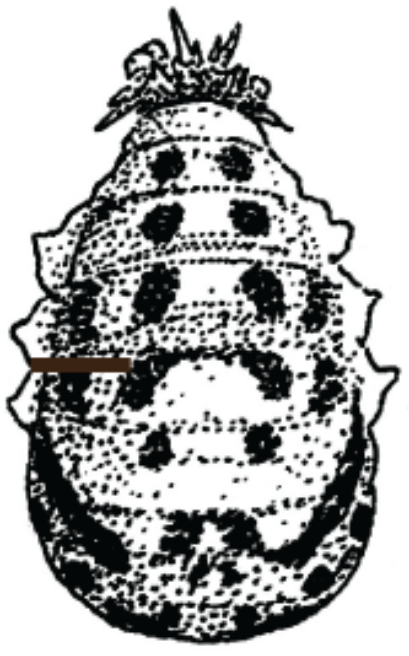


lady beetle adult



lady beetle larvae

To add  
stands,  
cut here >



lady beetle pupa



**If you want to make a diorama, cut two rectangles of card stock approximately one inch by six inches long. Form a square or loop and attach the ends with glue or tape. Attach one loop to the bottom of the larva and one loop to the bottom of the adult beetle. Play around with where it works best.**

**Pattern for loops:**



**For the pupa and eggs, cut a groove on the brown lines indicated on the models. Make stands by cutting out three 3/4 inch by 2 1/4 inch rectangles from card stock. Cut a groove in the middle of the stand as indicated and slip into the grooves you cut in the eggs and pupa. The stand should be perpendicular to the model so it stands up. The pupa will likely rest on one end.**



**Optional features: Lady beetles live on plants and search for their favorite food, which are aphids and other small insects. Add some leaves and/or aphids to your diorama. Enjoy!**